

Wellington

Te Whanganui-a-Tara (Māori)

Capital city



Clockwise from top: Oriental Bay and Te Aro along Wellington Harbour, The Beehive at Parliament, Newtown, Wellington Central and Mount Victoria, the Carillon, Cuba Street and its Bucket Fountain, Wellington Cable Car



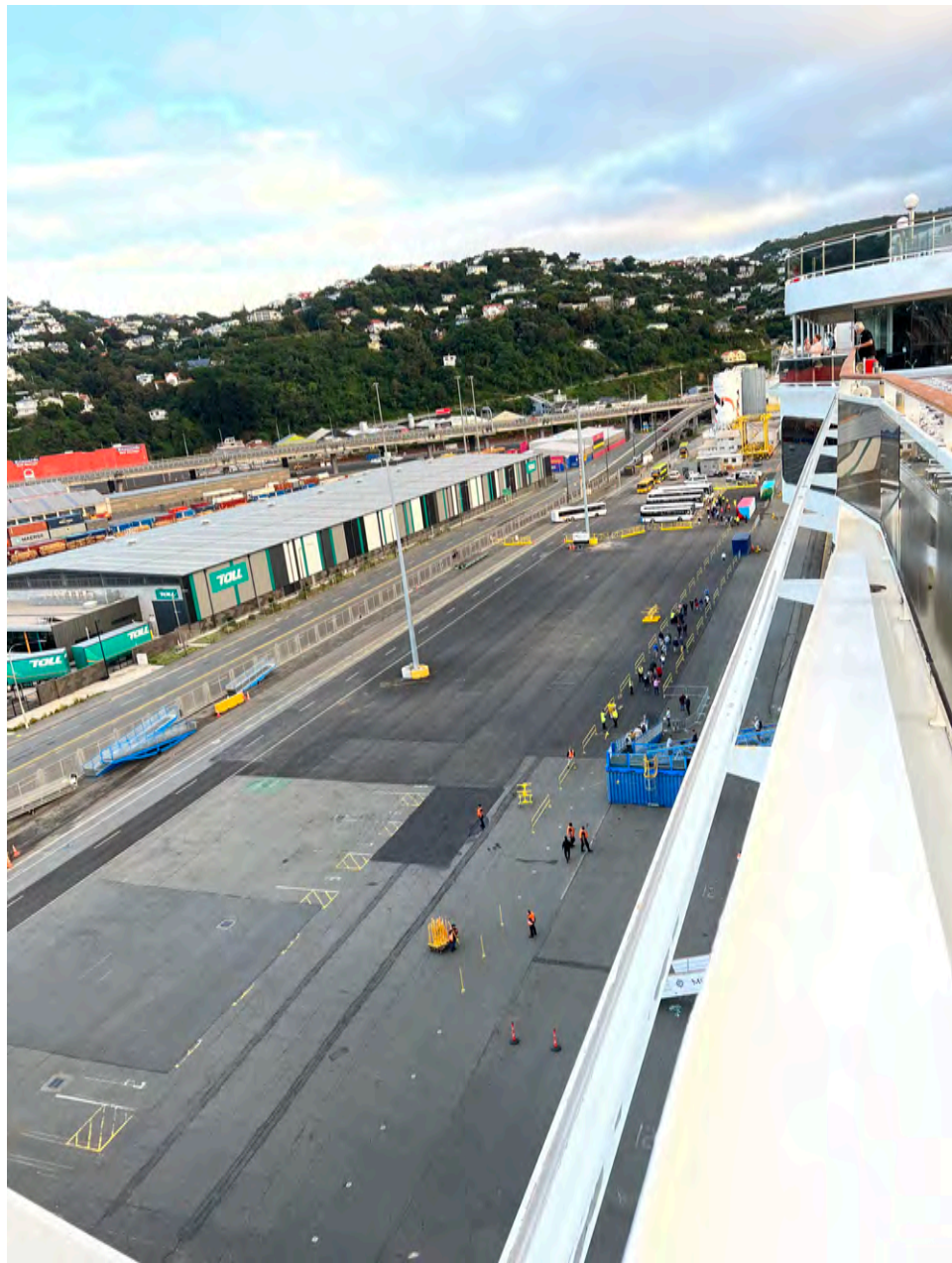
Wellington

Capital of New Zealand

Wellington, the capital of New Zealand, sits near the North Island's southernmost point on the Cook Strait. A compact city, it encompasses a waterfront promenade, sandy beaches, a working harbour and colourful timber houses on surrounding hills. From Lambton Quay, the iconic red Wellington Cable Car heads to the Wellington Botanic Gardens. Strong winds through the Cook Strait give it the nickname "Windy Wellington." — Google

I had a excursion this morning at 8:45 and the ship departs at 13:30, very short time here. Wellington is New Zealand's capital and our sightseeing tour started with a city tour and a scenic drive along Oriental Bay and then went inland to the the top of Mount Victoria for panoramic views of the city and harbor. Then to the Parliament Buildings then a drive past the Botanical Garden and the Lady Norwoord Rose Garden. Past Wellington Cathedral and then Old St. Paul's then a drive through the business district. We docked again in a container docking yard.

Day 91 Page 2
March 11, 2023
Wellington, New Zealand



Day 91 Page 3
March 11, 2023
Wellington, New Zealand

Tonights theatre Show: MSC Crew's Got Talent Second Edition.
Tonight the crew were the stars.

